

Table of Content

	Erythrocyte Sedimentation Rate	Sclavo-SED 10 Consumables Accessories	02-03
	Clinical Chemistry and Specific Proteins		04-09
	Specific urinary proteins	Reagents Calibrators and Controls - Biological Matrix Auxiliary Reagents	
	Specific plasma proteins	Reagents	
	Thermo (Konelab – Indiko) Line	Reagents Calibrators and Controls - Biological Matrix	
	Coagulation		10-13
	Reagents	Routine Tests Special Tests Immunodepletes Plasmas Calibrators Control Plasmas Auxiliary Reagents	
	Instruments	Sclavo-CLOT 4 Consumables Accessories	
	Serology and Bacteriology		14-21
	Serology	Febrile Antigens Syphilis Legionella Pneumophila Rheumatology Elisa Kits	
	Bacteriology	Identification Tests for Streptococci Identification Tests for Staphylococci Bacteria Typing Antisera Isolation medium for Trichomonas vaginalis and Candida Spp	
	ISO - Certificates		22

da controllare numeri pagine



Erythrocyte Sedimentation Rate

Sclavo-SED 10

Erythrocyte Sedimentation Rate analyser by a modified Westergren method



ADVANTAGES

ESR performed on the same Cell Blood Count (CBC) sample

No need of dedicated Citrate tubes

Innovative calculation algorithm supported by neural network

Continuous loading of samples

Results in only 25 minutes

Touch Screen user interface

No production of liquid waste

Safe and environmentally friendly

Sclavo-SED 10



PRODUCT	CODE
Sclavo-SED 10 <i>Erythrocyte Sedimentation Rate analyser by a modified Westergren method</i>	V01202110

Consumables

PRODUCT	CODE
SED CARD 10 <i>Device for recharging 1000 credits in Sclavo-SED instruments</i>	V02202210
SED CARD 25 <i>Device for recharging 2500 credits in Sclavo-SED instruments</i>	V02202225
SED CARD 50 <i>Device for recharging 5000 credits in Sclavo-SED instruments</i>	V02202250

Accessories

PRODUCT	CODE
Bar-Code Reader	A99000010
Thermal printer	A99000020
Thermal paper	A99000021





Clinical Chemistry and Specific Proteins

Sclavo Diagnostics International offers a comprehensive test menu, providing the clinical laboratory with a **wide range of testing options**. Our high-quality reagents will ensure the **accuracy** and **reliability** of your results.

FOTO?

ADVANTAGES

- Liquid form ready-to-use
- Long shelf life
- Fully validated performances
- Excellent correlation to reference methods
- Long on-boards stability
- Applications specifically developed for several analyzers are available

Specific plasma proteins



Reagents

* AVAILABLE UPON CUSTOMER REQUEST, WITH MINIMUM ORDER TO BE DECIDED

PRODUCT	R1		R2		CODE
	Vials	mL x Vials	Vials	mL x Vials	
ALPHA 1-ANTITRYPSIN (AAT)	2	40	2	6	B78182251 *
ALPHA 1- ACID GLYCOPROTEIN (AGP)	2	40	2	6	B78182250
ALPHA 2 MACROGLOBULIN (A2M)	1	40	1	6	B78182252 *
ANTISTREPTOLYSIN-O LATEX (ASO)	2	40	2	6	B78182269
APOLIPOPROTEIN AT - APO A1 *	2	40	2	6	B78182253 *
APOLIPOPROTEIN B - APOB *	2	40	2	6	B78182254 *
C1 ESTERASE INHIBITOR (CEI) *	1	40	1	6	B78182256 *
CERULOPLASMIN (CER)	1	40	1	6	B78182261 *
C3 COMPLEMENT (C3)	2	40	2	6	B78182259 *
C4 COMPLEMENT (C4)	2	40	2	6	B78182260 *
C REACTIVE PROTEIN (CRP)	3	60	2	3	B78182268
HAPTOGLOBIN - HPT *	2	40	2	6	B78182255 *
IMMUNOGLOBULINS A (IGA)	2	40	2	6	B78182264
IMMUNOGLOBULINS G (IGG)	2	40	2	6	B78182265
IMMUNOGLOBULINS M (IGM)	2	40	2	6	B78182266
PREALBUMIN (PAL)	1	40	1	6	B78182267 *
RHEUMATOID FACTORS LATEX (RF)	2	40	2	5	B78182262
KAPPA LIGHT CHAINS F&B (KLC)	2	40	2	6	B78182257
LAMBDA LIGHT CHAINS F&B (LLC)	2	40	2	6	B78182258
TRANSFERRIN (TRF)	2	40	2	6	B78182270

FOTO?

Specific urinary proteins

Reagents

* AVAILABLE UPON CUSTOMER REQUEST, WITH MINIMUM ORDER TO BE DECIDED

PRODUCT	FORMAT				CODE
	R1 Vials	mL x Vials	R2 Vials	mL x Vials	
MICROALBUMINURIA (mALB)	1	40	1	6	B78282271
ALPHA 1 MICROBULIN LATEX (A1M)	1	30	1	4	B78282282 *
BETA-2 MICROBULIN LATEX - B2M	1	30	1	4	B78182277 *
IMMUNOGLOBULINS G LATEX (UIGG)	1	30	1	4	B78282280 *
KAPPA LIGHT CHAINS FREE AND BOUND LATEX (uKLC)	1	30	1	4	B78282278
LAMBDA LIGHT CHAINS FREE AND BOUND LATEX (ULLC)	1	30	1	4	B78282279
TRANSFERRIN LATEX (UTRF)	1	30	1	4	B78282281 *

Calibrators and Controls

* AVAILABLE UPON CUSTOMER REQUEST, WITH MINIMUM ORDER TO BE DECIDED

PRODUCT	FORMAT		CODE
	Vials	mL x Vials	
SPECIFIC PROTEINS SINGLE LEVEL CALIBRATOR	5	1	B47182273
SPECIFIC PROTEINS CONTROLS LOW	3	1	B47182064
SPECIFIC PROTEINS CONTROLS HIGH	3	1	B47182065
APOLIPOPROTEIN A1 - B SINGLE LEVEL CALIBRATOR *	3	1	B47181684
APOLIPOPROTEIN AT/B CONTROL LOW	3	1	B47182213
APOLIPOPROTEIN A1/B CONTROL HIGH	3	1	B47182214
ASO SINGLE LEVEL CALIBRATOR	3	1	B47182291
CRP SINGLE LEVEL CALIBRATOR	3	1	B47182290
RF SINGLE LEVEL CALIBRATOR	3	1	B47182292
ASO-CRP-RF CONTROL LOW	3	1	B47182278
ASO-CRP-RF CONTROL HIGH	3	1	B47182279
URINE PROTEINS SINGLE LEVEL CALIBRATOR	3	1	B47282222
URINE PROTEINS CONTROL LOW	3	1	B47282223
URINE PROTEINS CONTROL HIGH	3	1	B47282224
DILUENT BUFFER	9	31	B77182382 *

Auxiliary Reagents

* AVAILABLE UPON CUSTOMER REQUEST, WITH MINIMUM ORDER TO BE DECIDED

PRODUCT	FORMAT		CODE
	Vials	mL x Vials	
WASH FLUID SOLUTION	8	20	B75182595
EDTA ANTICOAGULANT	6	20	B74181800
CHOL - HDL	2	10	B74181430 *

Thermo (KONELAB_INDIKO) Line/Multipurpose

Reagents

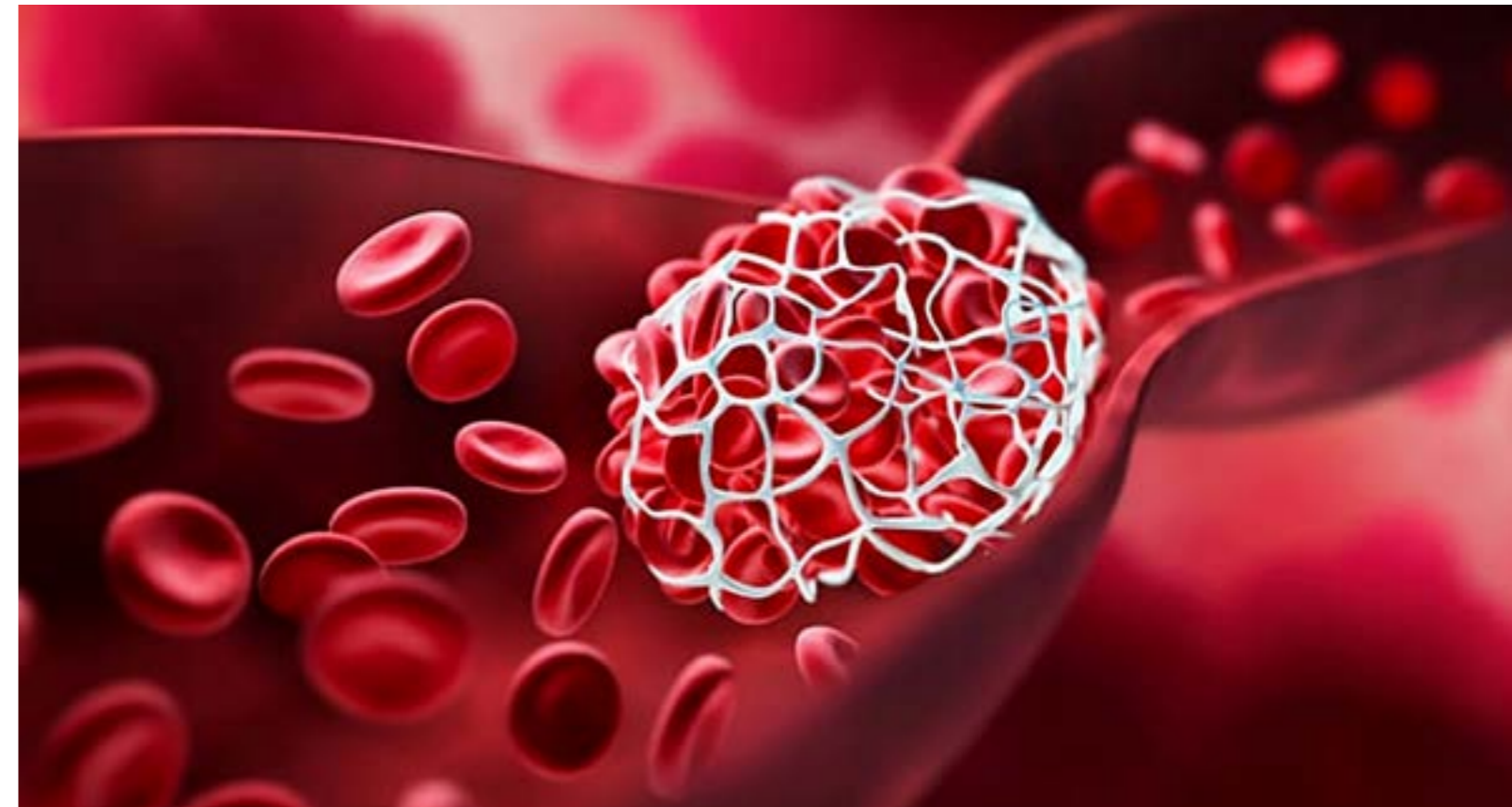
* AVAILABLE UPON CUSTOMER REQUEST, WITH MINIMUM ORDER TO BE DECIDED

PRODUCT	FORMAT				CODE
	R1 Vials	mL x Vials	R2 Vials	mL x Vials	
ALBUMIN BCG	7	20			B75182515
ALBUMIN BCP	7	20			B75182539
ALKALINE PHOSPHATASE - DGKC METHOD	10	16	5	8	B75182550
ALKALINE PHOSPHATASE - IFCC METHOD	10	16	5	8	B75182551
ALKALINE PHOSPHATASE - IFCC METHOD	15	4	1	16	B75182552
ALT - GPT	7	45	7	5	B75182521
ALT - GPT	8	18	8	2	B75182522
AST - GOT	7	45	7	5	B75182523
AST - GOT	8	18	8	2	B75182526
AMYLASE	8	5			B75182555
AMYLASE	12	20			B75182556
BILIRUBIN DIRECT	20	10	1	15	B75182500
BILIRUBIN TOTAL	4	60	2	9	B75182501
BILIRUBIN TOTAL	20	10	1	5	B75182578
CALCIUM AII	6	60			B75182559
CALCIUM AIII	8	20			B75182560
CHOLESTEROL	10	60			B75182527
CHOLESTEROL	12	20			B75182528
TOTAL CHOLINESTERASE	10	10			B75182540
INHIBITED CHOLINESTERASE	10	10			B75182541
CK MB - IFCC-DGKC METHOD	10	8	2	10	B75182568
CK MB - IFCC-DGKC METHOD	8	2,4	1	5	B75182569
CK NAC - IFCC-DGKC METHOD	10	8	2	10	B75182566
CK NAC - IFCC-DGKC METHOD	8	2,4	1	5	B75182567
ENZYMATIC CREATININE	4	30	10	4	B75182580
ENZYMATIC CREATININE	4	14	4	5	B75182581
CREATININE (JAFFE' METHOD)	6	54	4	18	B75182519
CREATININE (JAFFE' METHOD)	8	18	2	16	B75182520
GAMMA-GT	10	16	2	21	B75182553
GAMMA-GT	15	4	1	16	B75182554
GLUCOSE	10	60			B75182530
GLUCOSE	12	20			B75182531
HDL CHOLESTEROL	6	18	6	6	B75182582
LOL CHOLESTEROL	4	18		6	B75182584
IRON FERENE	10	20	1	11	B75182529



Coagulation

PRODUCT	FORMAT				CODE
	R1 Vials	mL x Vials	R2 Vials	mL x Vials	
LDH-P	10	9	1	10	B75182517
LDH-P	15	4,5	1	8	B75182518
LIPASE COLOR	4	20	4	5	B75182565
MAGNESIUM	12	20			B75182510
MAGNESIUM	8	10			B75182511
PANCREATIC AMYLASE	8	4	2	5	B75182575
PHOSPHORUS	6	60			B75182508
PHOSPHORUS	12	20			B75182509
TOTAL PROTEIN	10	60			B75182512
TOTAL PROTEIN	12	20			B75182513
TRIGLYCERIDES	6	60			B75182532
TRIGLYCERIDES	12	20			B75182533
UREA	10	48	48	12	B75182536
UREA	12	16	12	4	B75182537
URIC ACID	7	48	7	12	B75182562
URIC ACID	8	16	8	4	B75182563
TOTAL URINARY PROTEINS - SDS	10	60			B75282570
TOTAL URINARY PROTEINS - SDS	16	20			B75282582



Calibrators and Controls - Biological Matrix

PRODUCT	FORMAT		CODE
	Vials	mL x Vials	
CLINICONTROL N	5	5	B35181700
CLINICONTROL A	5	5	B35181701
CALIBRATION SERUM FOR AUTOMATION	5	3	B35181702
CK ISOCONTROL SERUM	4	2	B35181359
HDL - LDL CALIBRATOR	5	1	B35182590
HDL/LDL CHOLESTEROL CONTROL SERUM	5	3	B35182597
PTU - SDS CALIBRATOR	3	1	B35282591
SDS URINARY TOTAL PROTEINS CONTRO LOW - HIGH	2x3	1	B35282592



**ANALYTICAL
DIAGNOSTIC
QUALITY**

ADVANTAGES

Complete line for the diagnostic screening and special tests

Clotting, chromogenic and immunological methods

Applications developed for use on automated coagulation systems

High stability

Products available in different kit sizes

Reagents



Routine Tests

PRODUCT	FORMAT		CODE
	Vials	mL x Vials	
SCLAVO LIQUID ANTITHROMBIN (FACTOR XA) KIT Chromogenic method for the determination of antithrombin (Activated human Fx). Ready to use liquid reagent	6	3	K29005000
SCLAVO PT-READYQUICK	10	5	K29005005
SCLAVO PT-READYQUICK Thromboplastin from rabbit brain. Ready to use liquid reagent	10	10	K29005010
SCLAVO PT-HRTF	12	8	K29006008
SCLAVO PT-HRTF Human recombinant Thromboplastin	12	18	K29006018
SCLAVO - APTT-S KIT	10	5	K29005558
SCLAVO - APTT-S KIT Coagulation method for determining the activated partial thromboplastin time (silica activated). It includes 0,025M CaC/2. Ready to use liquid reagent	10	10	K29005559
SCLAVO FIBRINOGEN	10	2	K29053762
SCLAVO FIBRINOGEN Kit for determination of fibrinogen with Clauss method	10	5	K29053765
SCLAVO TT KIT Coagulation method for the determination of the Thrombine time	10	1	K29005392
SCLAVO - D-DIMER KIT Immunoturbidimetric method for the determination of D-Dimer on automatic instruments. The package also includes known values calibrators. Ready to use liquid reagent.	4	4	K29105501

Special Tests

PRODUCT	FORMAT		CODE
	Vials	mL x Vials	
SCLAVO CLOTTING PROTEIN S KIT Clotting kit for the quantitative determination of protein S	3	1	K29105511
SCLAVO FREE PROTEIN S Immunoturbidimetric kit for the quantitative determination of free protein S	4	2,5	K29105525
SCLAVO CHROMOGENIC PROTEIN C KIT Chromogenic kit for the determination of Protein C kit	4	3	K29105543



Calibrators

PRODUCT	FORMAT		CODE
	Vials	mL x Vials	
SCLAVO CALIBRATION PLASMA KIT	10	1	K29005185
SCLAVO % PT/DIRECT INR KIT	5	1	K29005490

Control Plasmas

PRODUCT	FORMAT		CODE
	Vials	mL x Vials	
SCLAVO NORMAL CONTROL PLASMA KIT	10	1	K29005301
SCLAVO ABNORMAL CONTROL PLASMA KIT	10	1	K29005302
SCLAVO - D - DIMER LOW CONTROL KIT	10	1	K29105509
SCLAVO - D - DIMER HIGH CONTROL KIT	10	1	K29105510

FOTO?

Instruments



Sclavo-CLOT 4

Semi-automated optical coagulation analyzer



75ul
REACTION
VOLUME



ADVANTAGES

4 reading channels to fit with small to medium size laboratory needs

The instrument support coagulative, colorimetric and immunoturbidimetric testing methods

Sophisticated electronics and precise calculation algorithms ensure highly accurate results

Sclavo-CLOT 4



PRODUCT	FORMAT	CODE
Sclavo-CLOT 4 Semi-automated optical coagulation analyzer		K27401004

Consumables

PRODUCT	FORMAT	CODE
CLOT CARD 25 Device for recharging 2500 credits in Sclavo-CLOT instruments		K27202225
Single cuvettes	1000 pcs	A99001000
Stirring Magnets	2 pcs	A99000002

Accessories

PRODUCT	FORMAT	CODE
Bar-Code Reader		A99000010
Thermal printer		A99000020
Thermal paper		A99000021



Serology and Bacteriology

Sclavo's well-known worldwide reputation dates back to the early 1900's as a pioneer in the microbiology field bacterial identification, research and development of kits for the serological diagnosis of pathologies caused by microbial agents: this tradition continues

FEBRILE ANTIGENS

The complete solution for serological diagnosis of typhoid and paratyphoid infections, brucellosis, rickettsiosis and listeriosis.

Reliable rigorous controls on the antigenic characteristics of bacterial strains used guarantee high sensitivity and specificity of the reaction.

Easy interpretation the stable coloured bacterial suspensions allow unequivocal readings in both the rapid slide tests and the microplate titrations.

Concordance of results obtained with the rapid test and with the microplate titration method are in agreement with the reference test-tube method.

STREPTO & STAPHYLO TESTS

Sclavo, as a reference partner for the clinical laboratory with a strong experience in In Vitro Diagnostics, offers a complete line of reagents devoted to the study in Bacteriology.

Strepto Group Test

Rapid the positive reaction is generally evident within one minute.

Accurate the sensitized reagents are specific for the single groups and do not give anycross reactions.

Easy interpretation of agglutination of the white latex on the black reaction slide facilitates reading of the results.

Complete the kit contains all the materials necessary for the execution of the test, including positive and negative controls.

Staphylo Rapid Test

Rapid the positive reaction becomes evident with most strains within one minute

Accurate highly sensitive even with Methicillin-resistant S. aureus (MRSA).

Easy interpretation of agglutination of the white latex on the black reaction slide facilitates reading of the results.

Serology



Febrile Antigens

* AVAILABLE UPON CUSTOMER REQUEST, WITH MINIMUM ORDER TO BE DECIDED

WIDAL WRIGHT TESTS FOR THE SEROLOGICAL DIAGNOSIS OF BRUCELLA AND SALMONELLA INFECTIONS

Slide Test (rapid screening test) Coloured bacterial suspensions for the determination of anti-Salmonella and anti-Brucella antibodies by the rapid slide method. **1 Tests = 50 microlitres**

PRODUCT	SIZE		NUMBER OF TESTS	CODE
	Vials	mL x Vials		
FEBRILE ANTIGEN KIT Contains ready-to-use coloured bacterial suspensions of Brucella, Salmonella TO, TH, AO, AH, BO, BH complete of positive and negative controls	7	3	420	CSI087309
BRUCELLA	1	6	120	CSI087401 *
STYPHI ANTIGENO	1	6	120	CSI087402 *
S.TYPHI ANTIGEN H	1	6	120	CSI087403 *
S. PARATYPHI B ANTIGEN O	1	6	120	CSI087405 *
S. PARATYPHI B ANTIGEN H	1	6	120	CSI087406 *
S. PARATYPHI A ANTIGEN O	1	6	120	CSI087407 *
S. PARATYPHI A ANTIGEN H	1	6	120	CSI087408 *
S. PARATYPHI C ANTIGEN O	1	6	120	CSI087409 *
S. PARATYPHI C ANTIGEN H	1	6	120	CSI087410 *
POSITIVE CONTROL - MULTI KIT	1	2		CSI087387 *
NEGATIVE CONTROL - MULTI KIT	1	2		CSI087388 *
POSITIVE CONTROL PLUS - MULTI KIT	1	2		CSI087389 *

* AVAILABLE UPON CUSTOMER REQUEST, WITH MINIMUM ORDER TO BE DECIDED

Tube Test Coloured bacterial suspensions for the determination of the anti-Salmonella and anti-Brucella anti-bodies by the tube method. **1 titration (1:20 --> 1:640) = 6 tubes = 3 ml**

PRODUCT	SIZE		NUMBER OF TESTS	CODE
	Vials	mL x Vials		
S.TYPHI ANTIGEN O+ H	1	20	6	CSI087201
S.TYPHI ANTIGEN O	1	20	6	CSI087202
S.TYPHI ANTIGEN H	1	20	6	CSI087203
S. PARATYPHI A ANTIGEN O + H	1	20	6	CSI087204
S. PARATYPHI A ANTIGEN O	1	20	6	CSI087205
S. PARATYPHI A ANTIGEN H	1	20	6	CSI087206
S. PARATYPHI B ANTIGEN O + H	1	20	6	CSI087207
S. PARATYPHI B ANTIGEN O	1	20	6	CSI087208
S. PARATYPHI B ANTIGEN H	1	20	6	CSI087209
S. PARATYPHI C ANTIGEN O+ H	1	20	6	CSI087210 *
S. PARATYPHI C ANTIGEN O	1	20	6	CSI087211 *
S. PARATYPHI C ANTIGEN H	1	20	6	CSI087212 *
BRUCELLA	1	20	6	CSI087213

* AVAILABLE UPON CUSTOMER REQUEST, WITH MINIMUM ORDER TO BE DECIDED

Plate Test

Coloured bacterial suspensions for the determination of anti-Salmonella and anti-Brucella antibodies by the microplate method. **1 Titration (1:20 --> 1:640) = 6 wells = 300 microlitres**

PRODUCT	SIZE		NUMBER OF TESTS	CODE
	Vials	mL x Vials		
ANTIGEN SET Contains ready-to-use coloured bacterial suspensions of Brucella, Salmonella TO, TH, A O+H, B O+H complete of positive and microplates	5	5	500	CSI087310
BRUCELLA	3	5	300	CSI087230
S. PARATYPHI B ANTIGEN O + H	3	5	300	CSI087231
S. PARATYPHI A ANTIGEN O + H	3	5	300	CSI087232
S.TYPHI ANTIGEN H	3	5	300	CSI087233
S.TYPHI ANTIGEN O	3	5	300	CSI087234
S.TYPHI ANTIGEN O + H	3	5	300	CSI087235
S. PARATYPHI C ANTIGEN O + H	3	5	300	CSI087236 *
S. PARATYPHI C ANTIGEN O	3	5	300	CSI087237 *
S. PARATYPHI C ANTIGEN H	3	5	300	CSI087238 *
S. PARATYPHI A ANTIGEN O	3	5	300	CSI087311
S. PARATYPHI A ANTIGEN H	3	5	300	CSI087312
S. PARATYPHI B ANTIGEN O	3	5	300	CSI087313
S. PARATYPHI B ANTIGEN H	3	5	300	CSI087314

* AVAILABLE UPON CUSTOMER REQUEST, WITH MINIMUM ORDER TO BE DECIDED

Multi Kit

(Slide, Tube and Plate test)

Coloured bacterial suspensions for the determination of anti-Salmonella and anti-Brucella antibodies by the slide, tube and plate method.

PRODUCT	SIZE		NUMBER OF TESTS	CODE
	Vials	mL x Vials		
FEBRILE ANTIGEN MULTI KIT Contains ready-to-use coloured bacterial suspensions of Brucella, Salmonella TO, TH, AO, AH, BO, BH complete of positive and negative controls	7	3	420	CSI087370
BRUCELLA	1	6	120	CSI087471 *
S. TYPHI ANTIGEN O	1	6	120	CSI087473 *
S. TYPHI ANTIGEN H	1	6	120	CSI087474 *
S. PARATYPHI A ANTIGEN O	1	6	120	CSI087476 *
S. PARATYPHI A ANTIGEN H	1	6	120	CSI087477 *
S. PARATYPHI B ANTIGEN O	1	6	120	CSI087479 *
S. PARATYPHI B ANTIGEN H	1	6	120	CSI087480 *
S. PARATYPHI C ANTIGEN O	1	6	120	CSI087481 *
S. PARATYPHI C ANTIGEN H	1	6	120	CSI087482 *
POSITIVE CONTROL - MULTI KIT	1	2		CSI087387 *
NEGATIVE CONTROL - MULTI KIT	1	2		CSI087388 *
POSITIVE CONTROL PLUS - MULTI KIT	1	2		CSI087389 *

WEIL FELIX TESTS FOR THE SEROLOGICAL DIAGNOSIS OF RICKETTSIAE INFECTIONS



Tube Test

Colorless bacterial suspensions for the determination of anti-Proteus antibodies by the tube method

1 Titration (1:20 --> 1:640) = 6 tubes = 3 ml

PRODUCT	SIZE		NUMBER OF TESTS	CODE
	Vials	mL x Vials		
PROTEUS KIT TUBE TEST Contains ready-to-use colourless suspensions of Proteus OX 19, OX 2 e OX K	3	20	6x3	CSI087252

Plate Test

Colorless bacterial suspensions for the determination of anti-Proteus antibodies by microplate method

1 Titration (1:20 --> 1:640) = 6 wells = 300 microlitres

PRODUCT	SIZE		NUMBER OF TESTS	CODE
	Vials	mL x Vials		
PROTEUS COLOR KIT Contains ready-to-use coloured bacterial suspensions of Proteus OX 19, OX 2 e OX K. Complete of positive control and microplates	3	5	300	CSI087254

Multi Kit

(Slide, Tube and Plate test)

Coloured bacterial suspensions for the determination of anti-Proteus antibodies by the slide, tube and plate method.

PRODUCT	SIZE		NUMBER OF TESTS	CODE
	Vials	mL x Vials		
PROTEUS MULTI KIT Contains ready-to-use coloured bacterial suspensions of Proteus OX 19, OX 2 e OX K. Complete of positive control slides and microplates	3	3	180	CSI087257

BACTERIAL AGGLUTINATION TEST FOR THE SEROLOGICAL DIAGNOSIS OF LISTERIA INFECTION

Tube Test

Colorless bacterial suspensions for the determination of anti-Proteus antibodies by the tube method

1 Titration (1:20 --> 1:640) = 6 tubes = 3 ml

PRODUCT	SIZE		NUMBER OF TESTS	CODE
	Vials	mL x Vials		
LISTERIA PLUS - TUBE TEST Contains ready-to-use colourless suspensions of Listerial O, IH, 4B0, 4BH complete of positive and negative control	4	20	160	CSI087249

Syphilis



PRODUCT	SIZE		NUMBER OF TESTS	CODE
	Vials	mL x Vials		
V.D.R.L. MICROGEN Microflocculation test for the detection of non-treponemal antibodies in human serum	2	2,5	1000	CSI087802
SYPHILIS CONTROL (to be used with CSI087802)	1	1		CSI053060

PRODUCT	SIZE		NUMBER OF TESTS	CODE
	Vials	mL x Vials		
R.P.R. Flocculation test for the detection of non-treponemal antibodies in human serum. Complete of positive and negative controls, slides and stirrers	1	5	250	CSI087243

PRODUCT	SIZE		NUMBER OF TESTS	CODE
	Vials	mL x Vials		
T.P.H.A. Hemoagglutination test for the detection of treponemal antibodies in human serum, Complete of positive and negative controls	1	7,5	100	CSI087244

PRODUCT	SIZE		NUMBER OF TESTS	CODE
	Vials	mL x Vials		
Guinea Pig Complement Guinea Pig serum for diagnosis by Complement Fixation Reaction	5	1	500	CSI053022

Rheumatology

PRODUCT	SIZE		NUMBER OF TESTS	CODE
	Vials	mL x Vials		
ASO LATEX TEST Latex agglutination test for the detection of Anti-Streptolysin O antibodies in human serum. Complete of positive and negative controls, slides and stirrers	1	5	100	CSA087020
RHEUMA LATEX TEST Latex agglutination Test for the detection of Rheumatoid Factors in human serum. Complete of positive and negative controls, slides and stirrers	1	5	100	CSA087026
CRP LATEX TEST Latex agglutination Test for the detection of C-Reactive Protein in human serum. Complete of positive and negative controls, slides and stirrers	1	5	100	CSA087027

Bacteriology



IDENTIFICATION Tests for STREPTOCOCCI

* AVAILABLE UPON CUSTOMER REQUEST, WITH MINIMUM ORDER TO BE DECIDED

PRODUCT	SIZE		NUMBER OF TESTS	CODE
	Vials	mL x Vials		
STREPTO GROUP TEST Latex agglutination Test for the identification of streptococcal groups A, B, C, D, F and G. Complete of chemical and enzymatic extraction reagents, positive control, slides and stirrers	6	1,5	6x50	CSI087315
STREPTO A LATEX	1	1,5	50	CSI087331 *
STREPTO B LATEX	1	1,5	50	CSI087332 *
STREPTO C LATEX	1	1,5	50	CSI087333 *
STREPTO D LATEX	1	3	50	CSI087334 *
STREPTO F LATEX	1	1,5	50	CSI087335 *
STREPTO G LATEX	1	1,5	50	CSI087336 *
STREPTO EXTRACTING REAGENT E (LYOPHIL)	1	2	50	CSI087337 *
STREPTO POSITIVE CONTROL (LYOPHIL)	1	1		CSI087338 *
STREPTO CHEMICAL EXTRACTING KIT	4	1,5/1,5/2X2,5	50	CSI087339 *

IDENTIFICATION Tests for STREPTOCOCCI

* AVAILABLE UPON CUSTOMER REQUEST, WITH MINIMUM ORDER TO BE DECIDED

PRODUCT	SIZE		NUMBER OF TESTS	CODE
	Vials	mL x Vials		
COAGULASE TEST Kit for the detection of coagulase-producing Staphylococci (rabbit Citrate plasma)	5	2	20	CSI051527 *
STAPHYLO RAPID TEST Latex agglutination Test for the identification of coagulase and/or protein A positive Staphylococcus strains. Complete of control latex, slides and stirrers	2	1,5	50	CSI087245



BACTERIAL TYPING ANTISERA

* AVAILABLE UPON CUSTOMER REQUEST, WITH MINIMUM ORDER TO BE DECIDED

Specific agglutinating antisera for the identification of pathogenic bacteria isolated in culture media.

PRODUCT	SIZE		NUMBER OF TESTS	CODE
	Vials	mL x Vials		
ANTI BRUCELLA AGGLUTINATING SERA	1	1	20	CSI050012 *
ANTI SHIGELLA DYSENTERIAE (1-2) AGGLUTINATING SERA	1	1	20	CSI050013 *
ANTI SHIGELLA FLEXERI AGGLUTINATING SERA	1	1	20	CSI050014 *
ANTI SHIGELLA BOYDI AGGLUTINATING SERA	1	1	20	CSI050015 *
ANTI SHIGELLA SONNEI AGGLUTINATING SERA	1	1	20	CSI050016 *
ANTI SALMONELA POLYVALENT AGGLUTINATING	1	1	20	CSI050050 *

ISOLATION MEDIUM for *Trichomonas vaginalis* and Spp

PRODUCT	SIZE		NUMBER OF TESTS	CODE
	Vials	mL x Vials		
GYNECULT Liquid medium for the cultivation and isolation of <i>Trichomonas vaginalis</i> and <i>Candida</i> Spp	25	4	25	CSI053070